





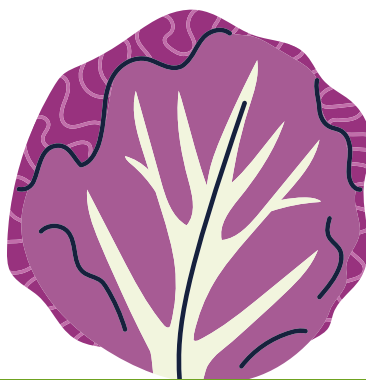
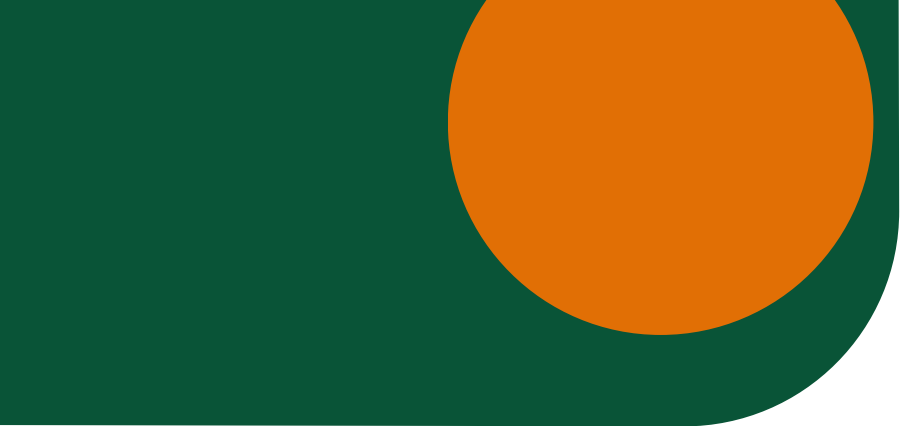


CABBAGE

	Seed:	Your own or from a nursery. You can also replant the base of the cabbage.
	Container:	5L bottle (needs more space for its roots).
	How to plant it:	Same as lettuce, but ensuring good support for stem growth.
	Light:	Plenty of sunlight (minimum 6 hours daily).
	Growth time:	80-120 days.
	Best time to plant it:	Late summer or autumn.



CC BY-NC-SA 4.0 <https://creativecommons.org/licenses/by-nc-sa/4.0/>



Co-funded by the European Union

Inclusive Hydroponic Crops is funded by the European Union. The opinions and views expressed are solely those of the author(s) and do not necessarily reflect those of the European Union or the European Education and Culture Executive Agency (EACEA). Neither the European Union nor EACEA can be held responsible for them.